

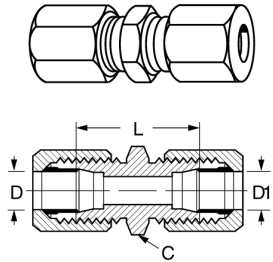
Adapters and tube fittings

Ermeto

J

Ermeto

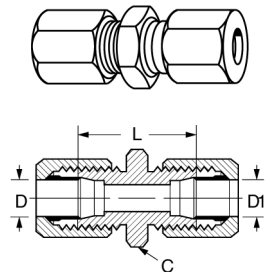
Small hex union



Part no. 7305x (Ref. SAE No. 080101)

| Part number | Tube O.D. | Hex C | D | D1 | L |
|-------------|-----------|---------|-------|-------|------|
| 7305x2 | 1/8 | 7/16 | 0.093 | 0.093 | 1.02 |
| 7305x3 | 3/16 | 7/16 | 0.125 | 0.125 | 1.11 |
| 7305x4 | 1/4 | 1/2 | 0.203 | 0.203 | 1.18 |
| 7305x5 | 5/16 | 9/16 | 0.234 | 0.234 | 1.18 |
| 7305x6 | 3/8 | 5/8 | 0.281 | 0.281 | 1.24 |
| 7305x6x4 | 3/8 | 5/8 | 0.281 | 0.203 | 1.22 |
| 7305x8 | 1/2 | 13/16 | 0.422 | 0.422 | 1.42 |
| 7305x8x6 | 1/2 | 13/16 | 0.422 | 0.281 | 1.33 |
| 7305x10 | 5/8 | 15/16 | 0.500 | 0.500 | 1.61 |
| 7305x12 | 3/4 | 1 1/8 | 0.656 | 0.656 | 1.81 |
| 7305x14 | 7/8 | 1 1/4 | 0.718 | 0.718 | 1.81 |
| 7305x16 | 1 | 1 3/8 | 0.875 | 0.875 | 1.81 |
| 7305x20 | 1 1/4 | 1 11/16 | 1.093 | 1.093 | 1.89 |
| 7305x24 | 1 1/2 | 2 | 1.344 | 1.344 | 1.96 |
| 7305x32 | 2 | 2 5/8 | 1.813 | 1.813 | 2.11 |

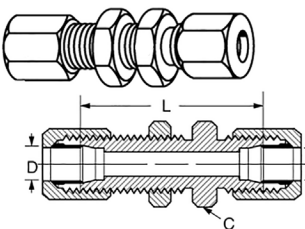
Large hex union



Part no. 7306x (Ref. SAE No. 080119)

| Part number | Tube O.D. | Hex C | D | D1 | L |
|-------------|-----------|-------|-------|-------|------|
| 7306x4 | 1/4 | 11/16 | 0.203 | 0.203 | 1.18 |
| 7306x6 | 3/8 | 13/16 | 0.281 | 0.281 | 1.24 |
| 7306x8 | 1/2 | 1 | 0.422 | 0.281 | 1.33 |
| 7306x8x6 | 1/2 | 1 | 0.422 | 0.422 | 1.42 |
| 7306x12 | 3/4 | 1 3/8 | 0.656 | 0.656 | 1.81 |
| 7306x16 | 1 | 1 5/8 | 0.875 | 0.875 | 1.81 |

Bulkhead union



Part no. 7325x (Ref. SAE No. 080601)

Bulkhead nut included, for replacement nuts use C5924x

| Part number | Tube O.D. | Hex C | D | L |
|-------------|-----------|-------|-------|------|
| 7325x4 | 1/4 | 11/16 | 0.203 | 1.89 |
| 7325x6 | 3/8 | 13/16 | 0.281 | 1.98 |
| 7325x8 | 1/2 | 1 | 0.422 | 2.22 |
| 7325x12 | 3/4 | 1 3/8 | 0.656 | 2.72 |
| 7325x16 | 1 | 1 5/8 | 0.875 | 2.72 |

Note: All measurements are in inches.