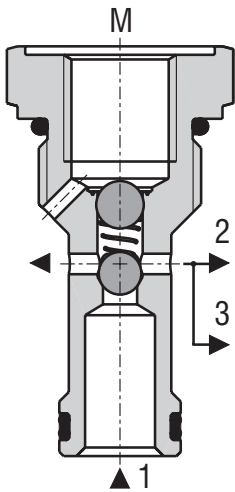


Check Valve With Pressure Gauge Port

SC1F-A3

3/4-16 UNF • Q_{max} 20 l/min (5 GPM) • p_{max} 350 bar (5100 PSI)

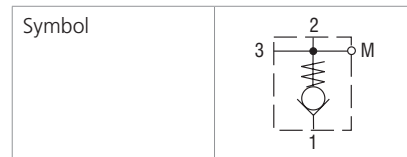


Technical Features

- › Hardened precision parts
- › Sharp-edged steel seats for dirt-tolerant performance
- › Leak-free closing, suitable for fast cycling with long life
- › Integrated pressure gauge port G 1/4" or SAE
- › In the standard version, the valve is zinc-coated for 240 h protection acc. to ISO 9227

Functional Description

A hydraulic check valve in the form of a screw-in cartridge for use in 3-way cavity. The cartridge has a ball check which is closed by spring until sufficient pressure is applied at port 1 to open flow to port 2.



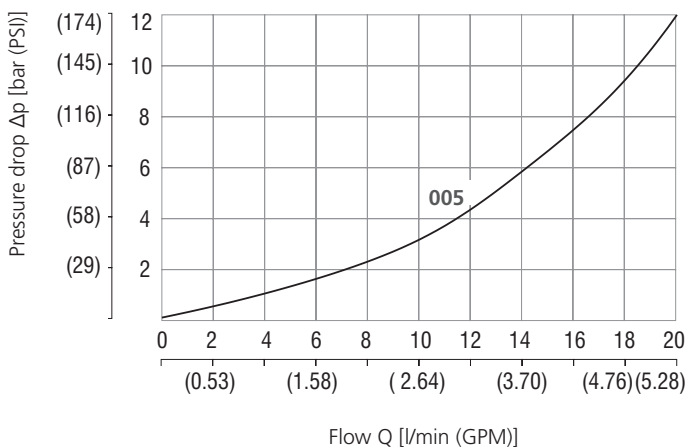
Technical Data

Valve size / Cartridge cavity		3/4-16 UNF-2A / A3 (C-8-3)
Max. flow	l/min (GPM)	20 (5.3)
Max. operating pressure	bar (PSI)	350 (5080)
Cracking pressure	bar (PSI)	0.5 (7.3)
Fluid temperature range (NBR)	°C (°F)	-30 +100 (-22 ... +212)
Fluid temperature range (FPM)	°C (°F)	-20 +120 (-4 ... +248)
Weight	kg (lbs)	0.05 (0.11)

		Datasheet	Type
General information		GI_0060	Products and operating conditions
Valve bodies	In-line mounted	SB_0018	SB-A3*
	Sandwich mounted	SB-04(06)_0028	SB-*A3*
Cavity details / Form tools		SMT_0019	SMT-A3*
Spare parts		SP_8010	

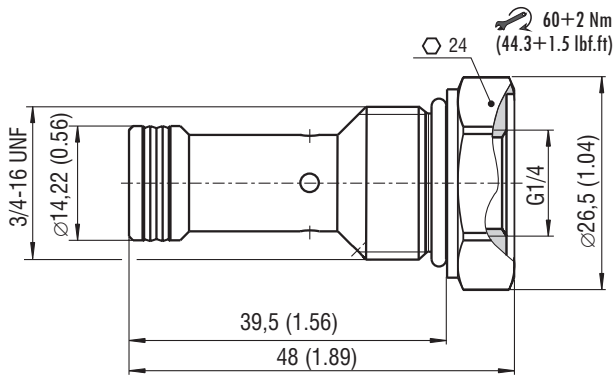
Characteristics measured at $v = 32 \text{ mm}^2/\text{s}$ (156 SUS)

Pressure drop related to flow rate

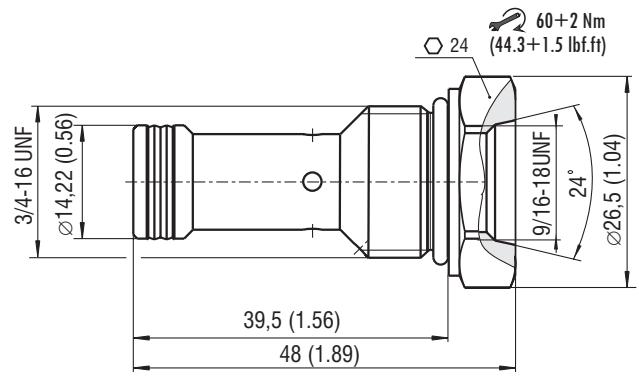


Dimensions in millimeters (inches)

Model G



Model S



Ordering Code

