

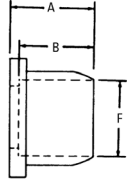
Adapters and tube fittings

ORS braze type

J

ORS braze type

ORS-BR shoulder internal braze



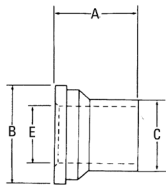
CAUTION

In applications exceeding +480°F (such as during brazing) order the oil-coated/ non-plated nut by using part number FC1857- Size-186. When plating is heated above +480°F, toxic gases are given off.

Part no. FC1229-(Dash size)* (Ref. SAE 520115)

Dash size	Tube O. D.		A		B		F	
	mm	in	mm	in	mm	in	mm	in
0404S	6,4	0.25	7,4	0.29	6,4	0.25	6,4	0.25
0604S	9,7	0.38	8,4	0.33	6,4	0.25	6,4	0.25
0606S	9,7	0.38	7,4	0.29	6,4	0.25	9,7	0.38
0806S	12,7	0.50	9,9	0.39	6,4	0.25	9,7	0.38
0808S	12,7	0.50	10,7	0.42	9,7	0.38	12,7	0.50
1208S	12,7	0.50	15,5	0.61	9,7	0.38	12,7	0.50
1010S	16,0	0.63	10,7	0.42	9,7	0.38	15,7	0.62
1210S	19,0	0.75	15,5	0.61	9,7	0.38	15,7	0.62
1212S	19,0	0.75	11,2	0.44	9,7	0.38	19,0	0.75
1612S	25,4	1.00	14,0	0.55	9,7	0.38	19,0	0.75
1614S	25,4	1.00	14,2	0.56	11,2	0.44	22,3	0.88
1616S	25,4	1.00	14,2	0.56	12,7	0.50	25,4	1.00
2016S	31,8	1.25	17,3	0.68	12,7	0.50	25,4	1.00
2020S	31,8	1.25	14,2	0.56	12,7	0.50	31,8	1.25
2420S	38,1	1.50	18,8	0.74	12,7	0.50	31,8	1.25
2424S	38,1	1.50	14,2	0.56	12,7	0.50	38,1	1.50

ORS-BR shoulder external braze/weld



CAUTION

In applications exceeding +480°F (such as during brazing) order the oil-coated/ non-plated nut by using part number FC1857- Size-186. When plating is heated above +480°F, toxic gases are given off.

Part no. FC2325-(Dash size)* (Ref. SAE 520172)

Dash size	Tube O. D.		A		B		C		E	
	mm	in	mm	in	mm	in	mm	in	mm	in
0404S	6,4	0.25	22,3	0.88	12,7	0.50	6,4	0.25	4,3	0.17
0606S	9,7	0.38	24,4	0.96	15,7	0.62	9,7	0.38	6,6	0.26
0808S	12,7	0.50	31,8	1.25	18,8	0.74	12,7	0.50	9,1	0.36
1010S	16,0	0.63	34,0	1.34	23,4	0.92	15,7	0.62	11,4	0.45
1212S	19,0	0.75	36,6	1.44	27,7	1.09	19,0	0.75	14,0	0.55
1616S	25,4	1.00	41,4	1.63	34,0	1.34	25,4	1.00	19,8	0.78
2020S	31,8	1.25	41,4	1.63	40,4	1.59	31,8	1.25	26,7	1.05
2424S	38,1	1.50	41,4	1.63	48,5	1.91	38,1	1.50	32,0	1.26

*Eaton braze counterbores are dimensioned for sized or emeryed tubing. If tubing is used as received, contact Eaton for appropriate part number.