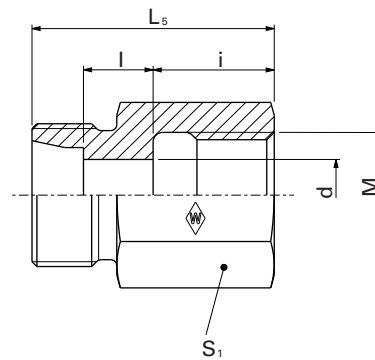


GAS ... M



H

System nuts for supplementing the stud
(for technical data, see part D of this catalog)

Series	PN bar (psi)	Tube outer diameter	DIN-ISO 228 (R ..., DIN 259) M	Model	kg/ 100 pc.	Art. no.	Stud GAS ... M	
							WALRING W-R ... VI	WALFORM WF-M ... VI
L	250 (3626)	6	M 10x1	GAS 6 LM	1.9	WAL060046	WAL624607	WAL625940
		8	M 12x1.5	GAS 8 LM	3.1	WAL061084	WAL624608	WAL625941
		10	M 14x1.5	GAS 10 LM	3.8	WAL060213	WAL624609	WAL625942
		12	M 16x1.5	GAS 12 LM	5.2	WAL025317	WAL624610	WAL625943
		15	M 18x1.5	GAS 15 LM	6.7	WAL024357	WAL624611	WAL625944
		18	M 22x1.5	GAS 18 LM	10.9	WAL062966	WAL624612	WAL625945
L	160 (2321)	22	M 26x1.5	GAS 22 LM	12.1	WAL061612	WAL624613	WAL625946
		6	M 12x1.5	GAS 6 SM	3.6	WAL066876	WAL624617	WAL625950
S	630 (9137)	8	M 14x1.5	GAS 8 SM	4.2	WAL061634	WAL624618	WAL625951
		10	M 16x1.5	GAS 10 SM	5.7	WAL060704	WAL624619	WAL625952
		12	M 18x1.5	GAS 12 SM	6.9	WAL060069	WAL624620	WAL625953
		14	M 20x1.5	GAS 14 SM	9.3	WAL066855		
		16	M 22x1.5	GAS 16 SM	11.4	WAL067979	WAL624621	WAL625954
S	400 (5801)	20	M 27x2	GAS 20 SM	15.2	WAL065147	WAL624622	WAL625955