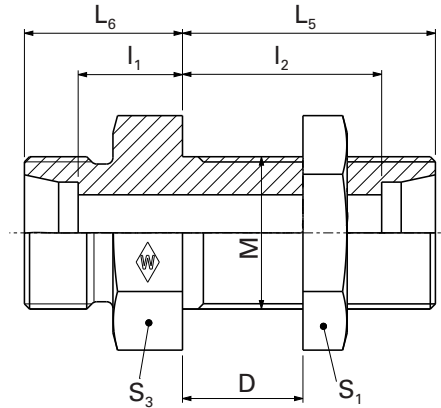


GSS ...
GSS ... -1.4571



E

System nuts for supplementing the stud
 (for technical data, see part D of this catalog)

Series	PN bar (psi)	Tube outer diameter	Model	M	D min.	D max.	kg/100 pc.	Stainless steel stud GSS ... -1.4571*		System nuts for supplementing the stud (for technical data, see part D of this catalog)		
								Stud GSS ...	Art. no.	Art. no.	WALRING W-R ... VI	WALFORM WF-M ... VI
L	500 (7252)	6	GSS 6 L m. 6kt M	M 12 x 1.5	4	16	4.0	WAL063273	WAL606286	WAL624607	WAL625940	WAL625980
		8	GSS 8 L m. 6kt M	M 14 x 1.5	4	16	5.0	WAL024147	WAL606287	WAL624608	WAL625941	WAL625981
		10	GSS 10 L m. 6kt M	M 16 x 1.5	4	16	6.5	WAL061656	WAL606288	WAL624609	WAL625942	WAL625982
	400 (5801)	12	GSS 12 L m. 6kt M	M 18 x 1.5	4	16	7.5	WAL061657	WAL602786	WAL624610	WAL625943	WAL625983
		15	GSS 15 L m. 6kt M	M 22 x 1.5	4	16	13.0	WAL061995	WAL617480	WAL624611	WAL625944	WAL625984
		18	GSS 18 L m. 6kt M	M 26 x 1.5	4	16	19.5	WAL061658	WAL605445	WAL624612	WAL625945	WAL625985
	250 (3626)	22	GSS 22 L m. 6kt M	M 30 x 2	5	16	25.5	WAL063759	WAL612436	WAL624613	WAL625946	WAL625986
		28	GSS 28 L m. 6kt M	M 36 x 2	5	16	34.0	WAL063760	WAL617481	WAL624614	WAL625947	WAL625987
		35	GSS 35 L m. 6kt M	M 45 x 2	5	16	49.4	WAL063761	WAL617482	WAL624615	WAL625948	WAL625988
		42	GSS 42 L m. 6kt M	M 52 x 2	5	16	71.6	WAL063762	WAL617483	WAL624616	WAL625949	WAL625989
S	800 (11603)	6	GSS 6 S m. 6kt M	M 14 x 1.5	4	16	6.2	WAL063763	WAL603960	WAL624617	WAL625950	WAL625990
		8	GSS 8 S m. 6kt M	M 16 x 1.5	4	16	9.0	WAL063764	WAL604963	WAL624618	WAL625951	WAL625991
		10	GSS 10 S m. 6kt M	M 18 x 1.5	4	16	11.3	WAL063765	WAL617063	WAL624619	WAL625952	WAL625992
	630 (9137)	12	GSS 12 S m. 6kt M	M 20 x 1.5	4	16	14.0	WAL063766	WAL604599	WAL624620	WAL625953	WAL625993
		14	GSS 14 S m. 6kt M	M 22 x 1.5	4	16	18.0	WAL063767	WAL617484			
		16	GSS 16 S m. 6kt M	M 24 x 1.5	4	16	17.5	WAL063768	WAL372243	WAL624621	WAL625954	WAL625994
	400 (5801)	20	GSS 20 S m. 6kt M	M 30 x 2	5	16	33.2	WAL063769	WAL370731	WAL624622	WAL625955	WAL625995
		25	GSS 25 S m. 6kt M	M 36 x 2	5	16	49.5	WAL063770	WAL372244	WAL624623	WAL625956	WAL625996
		30	GSS 30 S m. 6kt M	M 42 x 2	5	16	66.4	WAL063771	WAL617485	WAL624624	WAL625957	WAL625997
		38	GSS 38 S m. 6kt M	M 52 x 2	5	16	105.9	WAL063772	WAL604964	WAL624625	WAL625958	WAL625998

⚠ Caution: The pressure specifications refer to the steel version. For the stainless steel version (1.4571), please refer to the pressure specifications on page B5.

Special parts are available on request.